

# Modular Circulations Desks

## General Specifications - Circulation Desks

**Modular Case System:** Each case module is fully assembled, allowing for simple field assembly of the complete circulation desk as well as for easy reconfiguration, if necessary. Cases connect with male/female threaded metal connectors.

**Top:** Tops are 1-1/4" thick, three ply engineered wood construction with .050" High pressure laminate, HPL, and a phenolic backer sheet. The patron side is edged with 5/16" x 1-1/4" solid red oak (with the exception on the Malibu and Keystone design have 1-5/8" with a 1/4" radius top and bottom. The edges and back side of the top are edged with 1/8" solid red oak.

**Case Construction:** Circulation desk modules are constructed of 3/4" thick, three ply particleboard with plain sliced "A" grade oak veneer. All modules, except Malibu style, utilize a continuous front design (sides do not penetrate), with a 4" High recessed toe. Cabinets are assembled using glue and dowel joinery. Note: One Terminating End Panel is required for each exposed end of a complete desk assembly.

**Adjustable Shelves:** Adjustable shelves are 3/4" thick three ply particleboard plywood with "A" grade oak veneer faces. The exposed edges are edged with 1/8" solid red oak. Shelves are adjustable on 32mm increments.

**Drawers:** Drawers are constructed of 1/2" nine ply baltic birch plywood. Drawers have 3/4" thick fronts with "A" grade oak veneer. Box drawers have 100 lb. full extension slides, file drawers have 100 lb. full extension slides.

**Doors:** Doors are constructed of 3/4" thick, three ply particleboard with plain sliced "A" grade oak veneer faces and edged on all sides with 1/8" solid red oak. Door hardware includes concealed hinges, fully adjustable in all 3 axes, and wire pulls.

**Continuous Top Construction:** Tops may be specified as continuous.

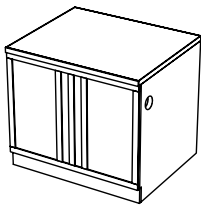
**Locks:** Units may be specified with doors and or drawers locking, keyed random or alike.

**Design Lines:** mediatechnologies® offers seven design lines of circulation desk modules, all using the general construction specifications above.

To specify a design line you must include a letter indicator: No letter indicator will specify our standard Bookmark design.

**M**-Metro      **L**-Lexington      **H**-Heritage      **MB**-Malibu  
**CL**-Charleston      **KS**-Keystone

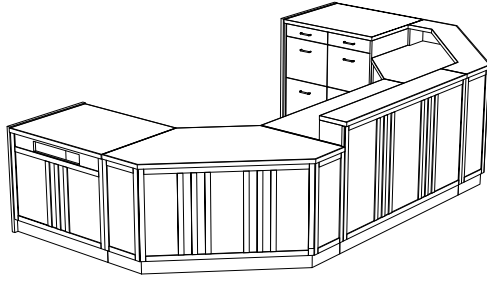
Please see below for design descriptions



**Heritage:** a mission style design line, also using solid oak details applied to the patron side of most modular units.  
Model Number example for  
Heritage Desk unit;  
MCD-H-36D-29

# Heritage

## Circulation Desks



Desk Units				
36" Wide	Model Number	Description	Wgt.	List Price
	MCD-H-36D-29	Desk Unit, 36"W X 30"D X 29" H	120	\$3,084
	MCD-H-36D-32	Desk Unit, 36"W X 30"D X 32" H	126	\$3,084
	MCD-H-36D-39	Desk Unit, 36"W X 30"D X 39" H	141	\$3,278
	MCD-H-36D-32-ADJ	Desk Unit, 36"W X 30"D X ADJ. H	126	\$3,358
48" Wide	Model Number	Description	Wgt.	List Price
	MCD-H-48D-29	Desk Unit, 48"W X 30"D X 29" H	131	\$4,112
	MCD-H-48D-32	Desk Unit, 48"W X 30"D X 32" H	138	\$4,112
	MCD-H-48D-39	Desk Unit, 48"W X 30"D X 39" H	153	\$4,364
	MCD-H-48D-32-ADJ	Desk Unit, 48"W X 30"D X ADJ. H	138	\$4,479
72" Wide	Model Number	Description	Wgt.	List Price
	MCD-H-72D-29	Desk Unit, 72"W X 30"D X 29" H	206	\$6,266
	MCD-H-72D-32	Desk Unit, 72"W X 30"D X 32" H	212	\$6,266
	MCD-H-72D-39	Desk Unit, 72"W X 30"D X 39" H	230	\$6,299
	MCD-H-72D-32-ADJ	Desk Unit, 72"W X 30"D X ADJ. H	212	\$6,830
Book Return	Model Number	Description	Wgt.	List Price
	MCD-H-36BR-29	Book Return, 36"W X 30"D X 29" H	118	\$3,304
	MCD-H-36BR-32	Book Return, 36"W X 30"D X 32" H	124	\$3,304
	MCD-H-36BR-39	Book Return, 36"W X 30"D X 39" H	139	\$3,504
Descending Platform Book Truck	Model Number	Description	Wgt.	List Price
	MCD-DBT-1824-21	Depressible Platform Book Truck, 18"D x 24.25"W x 21"H, For curved 29"H Book Return Units and Nomad Book Return	135	\$3,407
	MCD-DBT-1824-24	Depressible Platform Book Truck, 18"D x 24.25"W x 24"H, For Curved 32"-39"H Book Return Units	135	\$3,407
	MCD-DBT-2424-21	Depressible Platform Book Truck, 23.625"D x 24.25"W x 21"H, For 29"H Book Return Units with Extended Chutes and 32"H Keystone and Malibu Book Returns	137	\$3,407
	MCD-DBT-2424-24	Depressible Platform Book Truck, 23.625"D x 24.25"W x 24"H, For 32" and 39"H Book Return Units	137	\$3,407
Top Surface Slot Book Return Module with Drawer and Shelf Storage	Model Number	Description	Wgt.	List Price
	MCD-H-36SBR-TOP-29	Book Return w Top Slot, 36"W X 30"D X 29" H	200	\$4,771
	MCD-H-36SBR-TOP-32	Book Return w Top Slot, 36"W X 30"D X 32" H	204	\$4,771
	MCD-H-36SBR-TOP-39	Book Return w Top Slot, 36"W X 30"D X 39" H	218	\$4,812

# Heritage

## Circulation Desks

Cupboard Units	Model Number	Description	Wgt.	List Price
	MCD-H-36CS-29	Cupboard Unit, 36"W X 30"D X 29" H	189	\$4,680
	MCD-H-36CS-32	Cupboard Unit, 36"W X 30"D X 32" H	192	\$4,680
	MCD-H-36CS-39	Cupboard Unit, 36"W X 30"D X 39" H	210	\$4,731
Cupboard Unit With Drawer	Model Number	Description	Wgt.	List Price
	MCD-H-36CD-29	Cupboard Unit, 36"W X 30"D X 29" H with drawer	201	\$5,383
	MCD-H-36CD-32	Cupboard Unit, 36"W X 30"D X 32" H with drawer	207	\$5,383
	MCD-H-36CD-39	Cupboard Unit, 36"W X 30"D X 39" H with drawer	225	\$5,428
Cupboard Unit With 2 & 3 Drawers (Cupboard Left)	Model Number	Description	Wgt.	List Price
	MCD-H-36C2DL-29	Cupboard Unit, Left, 36"W X 30"D X 29" H with 2 drawers, file/file	222	\$6,886
	MCD-H-36C2DL-32	Cupboard Unit, Left, 36"W X 30"D X 32" H with 2 drawers, file/file	225	\$6,886
	MCD-H-36C3DL-32	Cupboard Unit, Left, 36"W X 30"D X 32" H with 3 drawers, box/box/file	230	\$7,142
	MCD-H-36C3DL-39	Cupboard Unit, Left, 36"W X 30"D X 39" H with 3 drawers, box/file/file	256	\$7,211
Cupboard Unit With 2 & 3 Drawers (Cupboard Right)	Model Number	Description	Wgt.	List Price
	MCD-H-36C2DR-29	Cupboard Unit, Right, 36"W X 30"D X 29" H with 2 drawers, file/file	222	\$6,886
	MCD-H-36C2DR-32	Cupboard Unit, Right, 36"W X 30"D X 32" H with 2 drawers, file/file	225	\$6,886
	MCD-H-36C3DR-32	Cupboard Unit, Right, 36"W X 30"D X 32" H with 3 drawers, box/box/file	230	\$7,142
	MCD-H-36C3DR-39	Cupboard Unit, Right, 36"W X 30"D X 39" H with 3 drawers, box/file/file	256	\$7,211
Cupboard Unit With Open Storage (Cupboard Left)	Model Number	Description	Wgt.	List Price
	MCD-H-36COSL-29	Cupboard Unit, Left, 36"W X 30"D X 29" H with open storage	186	\$4,901
	MCD-H-36COSL-32	Cupboard Unit, Left, 36"W X 30"D X 32" H with open storage	190	\$4,901
	MCD-H-36COSL-39	Cupboard Unit, Left, 36"W X 30"D X 39" H with open storage	204	\$4,971
Cupboard Unit With Open Storage (Cupboard Right)	Model Number	Description	Wgt.	List Price
	MCD-H-36COSR-29	Cupboard Unit, Right, 36"W X 30"D X 29" H with open storage	186	\$4,901
	MCD-H-36COSR-32	Cupboard Unit, Right, 36"W X 30"D X 32" H with open storage	190	\$4,901
	MCD-H-36COSR-39	Cupboard Unit, Right, 36"W X 30"D X 39" H with open storage	204	\$4,971
Open Storage Units	Model Number	Description	Wgt.	List Price
	MCD-H-36OS-29	Open Storage, 36"W X 30"D X 29" H	185	\$3,756
	MCD-H-36OS-32	Open Storage, 36"W X 30"D X 32" H	189	\$3,756
	MCD-H-36OS-39	Open Storage, 36"W X 30"D X 39" H	202	\$3,787

\* Note: For Triangle Corner Unit with Shelves, use Bookmark MCD-TCS units.

Prices and specifications subject to change without notice

P-HERITAGECIRCDKESKS-251124

# Heritage

## Circulation Desks

Open Storage Unit With Drawer	Model Number	Description	Wgt.	List Price
	MCD-H-360SD-29	Open Storage, 36"W X 30"D X 29" H with drawer	200	\$4,608
	MCD-H-360SD-32	Open Storage, 36"W X 30"D X 32" H with drawer	204	\$4,608
	MCD-H-360SD-39	Open Storage, 36"W X 30"D X 39" H with drawer	218	\$4,650

Open Storage Unit With 2 & 3 Drawers (Open Storage Left)	Model Number	Description	Wgt.	List Price
	MCD-H-360S2DL-29	Open Storage, Left, 36"W X 30"D X 29" H with 2 drawers, file/file	209	\$6,675
	MCD-H-360S2DL-32	Open Storage, Left, 36"W X 30"D X 32" H with 2 drawers, file/file	212	\$6,675
	MCD-H-360S3DL-32	Open Storage, Left, 36"W X 30"D X 32" H with 3 drawers, box/box/file	220	\$6,927
	MCD-H-360S3DL-39	Open Storage, Left, 36"W X 30"D X 39" H with 3 drawers, box/file/file	240	\$7,230

Open Storage Unit With 2 & 3 Drawers (Open Storage Right)	Model Number	Description	Wgt.	List Price
	MCD-H-360S2DR-29	Open Storage, Right, 36"W X 30"D X 29" H with 2 drawers, file/file	209	\$6,675
	MCD-H-360S2DR-32	Open Storage, Right, 36"W X 30"D X 32" H with 2 drawers, file/file	212	\$6,675
	MCD-H-360S3DR-32	Open Storage, Right, 36"W X 30"D X 32" H with 3 drawers, box/box/file	220	\$6,927
	MCD-H-360S3DR-39	Open Storage, Right, 36"W X 30"D X 39" H with 3 drawers, box/file/file	240	\$7,230

Kneespace Unit	Model Number	Description	Wgt.	List Price
	MCD-H-36KS-32	Kneespace Unit, 36"W X 30"D X 32" H	138	\$4,338
	MCD-H-36KS-39	Kneespace Unit, 36"W X 30"D X 39" H	151	\$4,376

Corner Units				
45 Degree Flat	Model Number	Description	Wgt.	List Price
	MCD-H-30FC45-29	Flat Corner, 30"W X 30"D X 29" H	74	\$4,041
	MCD-H-30FC45-32	Flat Corner, 30"W X 30"D X 32" H	77	\$4,041
	MCD-H-30FC45-39	Flat Corner, 30"W X 30"D X 39" H	84	\$4,432

90 Degree Extended Flat	Model Number	Description	Wgt.	List Price
	MCD-H-30EFC-29	Flat Ext. Corner, 66"W X 30"D X 29" H	168	\$7,452
	MCD-H-30EFC-32	Flat Ext. Corner, 66"W X 30"D X 32" H	177	\$7,452
	MCD-H-30EFC-39	Flat Ext. Corner, 66"W X 30"D X 39" H	190	\$7,666

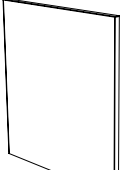
90 Degree Square	Model Number	Description	Wgt.	List Price
	MCD-H-30SC-29	Square Corner, 30"W X 30"D X 29" H	152	\$4,790
	MCD-H-30SC-32	Square Corner, 30"W X 30"D X 32" H	155	\$4,790
	MCD-H-30SC-39	Square Corner, 30"W X 30"D X 39" H	170	\$4,819

Triangle Corner Unit	Model Number	Description	Wgt.	List Price
	MCD-H-30TC-29	Triangle Corner, 30"W X 30"D X 29" H	88	\$3,770
	MCD-H-30TC-32	Triangle Corner, 30"W X 30"D X 32" H	91	\$3,770
	MCD-H-30TC-39	Triangle Corner, 30"W X 30"D X 39" H	98	\$3,969

\* Note: For Triangle Corner Unit with Shelves, use Bookmark MCD-TCS units.

# Circulation Desk End Panels

Note: One Terminating End Panel is required for each exposed end of a complete desk assembly. End Panels are available in all standard design lines. Terminating end panels are available to create right or left facing units. Right side and left side is determined from the perspective of the desk user.

Heritage	Model Number	Description	Wgt.	Price
	MCD-H-29EP-LH	Heritage Finished Left End Panel for 29"H Unit	19	\$881
	MCD-H-29EP-RH	Heritage Finished Right End Panel for 29"H Unit	19	\$881
	MCD-H-32EP-LH	Heritage Finished Left End Panel for 32"H Unit	20	\$881
	MCD-H-32EP-RH	Heritage Finished Right End Panel for 32"H Unit	20	\$881
	MCD-H-39EP-LH	Heritage Finished Left End Panel for 39"H Unit	24	\$1,006
	MCD-H-39EP-RH	Heritage Finished RightEnd Panel for 39"H Unit	24	\$1,006

## Transactions Tops

Transaction Tops	Description	Wgt.	List Price
MCD-H-36-TRX	Heritage Transaction Top 36"W X 7"H	19	\$946
MCD-H-72-TRX	Heritage Transaction Top 72"W X 7"H	33	\$1,808
MCD-H-30SC-TRX	Heritage Transaction Top Square Unit 9"D X 7"H	19	\$2,252
MCD-H-30EFC-TRX	Heritage Transaction Top Extended Flat 9"D X 7"H	30	\$2,617

### Set Up Charges and Upcharges for Non-Standard and Custom Finishes

Model Number	Description	List Price
Custom Finish	Upcharge for custom stain finish	\$701
Non-Standard Stain	Upcharge for non-standard stains already matched	\$304
Sprayon Finish	Upcharge, per color, per order, for Sprayon finish	\$361