

### General Specifications

**End Panels:** All vertical panels are 1" engineered wood with high pressure laminate or thermally fused laminate on both faces; exposed edges are banded with 3mm PVC with edges and corners radiused 1/8". The vertical panels use mechanical fasteners to secure them to top, back and base panels. The bottom of the end panels has non-marring adjustable height glides installed.

**Top:** The top panel is 1" thick engineered with high pressure laminate or thermally fused laminate faces. The edges are banded with 3mm PVC. The top is attached with dowels and mechanical fasteners.

**Back Panel:** The back panel is 1" thick engineered with high pressure laminate or thermally fused laminate face on the exposed side and .030 phenolic backer on the non-exposed wall side.

**Base Assembly:** The storage base assembly is built from 1" thick engineered wood with high pressure laminate or thermally fused laminate faces; exposed edges are banded with 3mm PVC. The base is constructed using dowel and glue joinery and fastened to the vertical panels with bolts into metal inserts.

**Toe Assembly:** The toe assembly is built from 1" thick engineered wood with high pressure laminate or thermally fused laminate faces. The assembly is fastened to the vertical panels using cabinet screws.

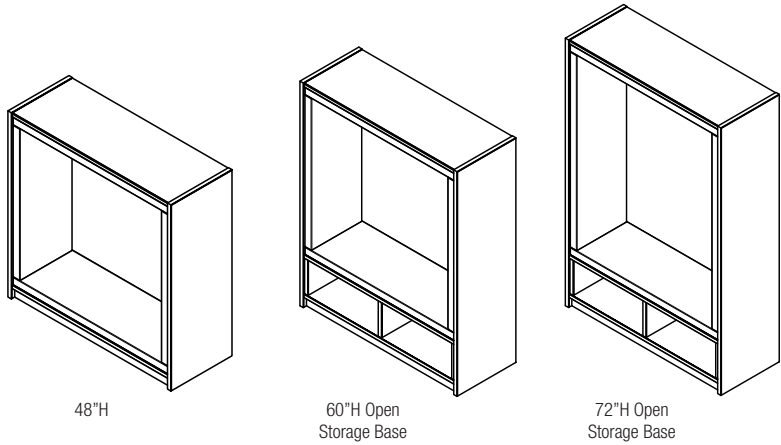
**Upholstered Cushions:** Cushions are high density 2.3/60 or 2.8/60 foam core based on design needs. Fabric cover is wrapped and sewn using single needle top stitch on all seams. Cushion has built-in bottom panel to secure fastening hook and loop strips so cushions can be removed to be cleaned.

**Note:** Robin's Nest ships fully assembled and are single faced, designed to use against a wall.

**Required to order:**

Model # including:

- Laminate OR melamine selection
- PVC selection
- Fabric selection



Robin's Nest, Closed Back, HPL Construction 48"H													
Model Number	O.A. D"	O.A. W"	O.A. H"	COM Ydg	COM Grade 1	Grade 2	Grade 3	Grade 4	Grade 5	Grade 6	Grade 7	Grade 8	Grade 9
NSTR-1848L-48	18	48	48		\$3,997	\$4,208	\$4,429	\$4,662	\$4,908	\$5,166	\$5,438	\$5,725	\$6,026
Robin's Nest, Closed Back,TFL Construction 48"H													
Model Number	O.A. D"	O.A. W"	O.A. H"	COM Ydg	COM Grade 1	Grade 2	Grade 3	Grade 4	Grade 5	Grade 6	Grade 7	Grade 8	Grade 9
NSTR-1848T-48	18	48	48		\$3,668	\$3,861	\$4,064	\$4,278	\$4,502	\$4,740	\$4,989	\$5,252	\$5,528
Robin's Nest, Closed Back, Open Storage Base, HPL Construction 60"H													
Model Number	O.A. D"	O.A. W"	O.A. H"	COM Ydg	COM Grade 1	Grade 2	Grade 3	Grade 4	Grade 5	Grade 6	Grade 7	Grade 8	Grade 9
NSTR-1848L-60	18	48	60		\$4,997	\$5,259	\$5,537	\$5,828	\$6,135	\$6,458	\$6,798	\$7,156	\$7,532
Robin's Nest, Closed Back, Open Storage Base, TFL Construction 60"H													
Model Number	O.A. D"	O.A. W"	O.A. H"	COM Ydg	COM Grade 1	Grade 2	Grade 3	Grade 4	Grade 5	Grade 6	Grade 7	Grade 8	Grade 9
NSTR-1848T-60	18	48	60		\$4,584	\$4,826	\$5,080	\$5,347	\$5,629	\$5,924	\$6,236	\$6,565	\$6,910
Robin's Nest, Closed Back, Open Storage Base, TFL Construction 72"H													
Model Number	O.A. D"	O.A. W"	O.A. H"	COM Ydg	COM Grade 1	Grade 2	Grade 3	Grade 4	Grade 5	Grade 6	Grade 7	Grade 8	Grade 9
NSTR-1848T-72	18	48	72		\$5,501	\$5,791	\$6,095	\$6,417	\$6,754	\$7,110	\$7,483	\$7,877	\$8,292
Robin's Nest, Closed Back, Open Storage Base, HPL Construction 72"H													
Model Number	O.A. D"	O.A. W"	O.A. H"	COM Ydg	COM Grade 1	Grade 2	Grade 3	Grade 4	Grade 5	Grade 6	Grade 7	Grade 8	Grade 9
NSTR-1848L-72	18	48	72		\$5,997	\$6,312	\$6,644	\$6,994	\$7,362	\$7,749	\$8,157	\$8,587	\$9,038

General Specifications

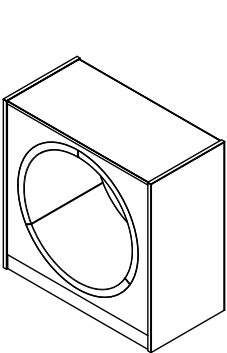
**End Panels:** All vertical panels are 3/4" engineered wood with high pressure laminate on both faces; exposed edges are banded with 3mm PVC with edges and corners radiused 1/8". The vertical panels use mechanical fasteners to secure them to top, back and base panels. The bottom of the end panels has non-marring adjustable height glides installed.

**Top:** The top panel is 3/4" thick engineered with high pressure laminate faces. The edges are banded with 3mm PVC. The top is attached with mechanical fasteners.

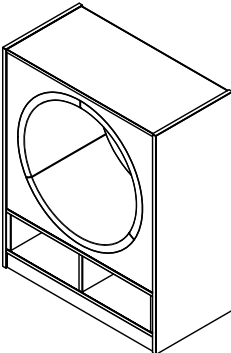
**Internal Vertical Panel:** The vertical panels are 3/4" thick engineered panels attached to the top and bottom panels using dados and glue.

**Toe Assembly:** The toe assembly is built from 1" thick engineered wood with high pressure laminate faces. The assembly is fastened to the vertical panels using cabinet screws.

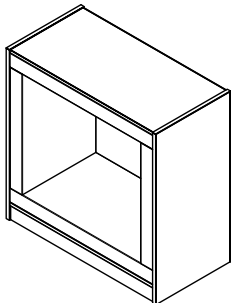
**Upholstered Cushions:** Cushions are high density 2.3/60 or 2.8/60 foam core based on design needs. Fabric cover is wrapped and sewn using single needle top stitch on all seams. Cushion has built-in bottom panel to secure fastening hook and loop strips so cushions can be removed to be cleaned.



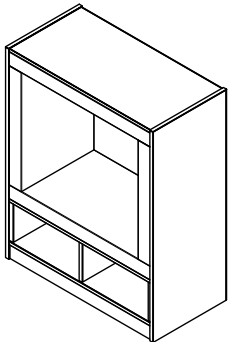
48"H Round



60"H Round  
Open Storage Base



48"H Square



60"H Square  
Open Storage Base

Owl's Nest,Round, Open Back, HPL Construction 48"H														
Model Number	O.A. D"	O.A. W"	O.A. H"	Weight lbs	COM Ydg	COM Grade 1	Grade 2	Grade 3	Grade 4	Grade 5	Grade 6	Grade 7	Grade 8	Grade 9
NSTOWR-2448L-48	24	48	48			\$6,524	\$6,867	\$7,228	\$7,609	\$8,009	\$8,430	\$8,875	\$9,342	\$9,833
Owl's Nest,Round, Open Back, HPL Construction 60"H														
NSTOWR-2448L-60	24	48	60			\$8,154	\$8,584	\$9,035	\$9,511	\$10,012	\$10,539	\$11,093	\$11,677	\$12,291
Owl's Nest,Round, Open Back, Open Storage Base, HPL Construction 60"H														
NSTOWR-OS-2448L-60	24	48	60			\$8,154	\$8,584	\$9,035	\$9,511	\$10,012	\$10,539	\$11,093	\$11,677	\$12,291
Owl's Nest, Square, Open Back, HPL Construction 48"H														
Model Number	O.A. D"	O.A. W"	O.A. H"	Weight lbs	COM Ydg	COM Grade 1	Grade 2	Grade 3	Grade 4	Grade 5	Grade 6	Grade 7	Grade 8	Grade 9
NSTOWS-2448L-48	24	48	48			\$6,524	\$6,867	\$7,228	\$7,609	\$8,009	\$8,430	\$8,875	\$9,342	\$9,833
Owl's Nest,Square , Open Back, HPL Construction 60"H														
NSTOWS-2448L-60	24	48	60			\$8,154	\$8,584	\$9,035	\$9,511	\$10,012	\$10,538	\$11,093	\$11,677	\$12,291
Owl's Nest, Square, Open Back, Open Storage Base, HPL Construction 60"H														
NSTOWS-OS-2448L-60	24	48	60			\$8,154	\$8,584	\$9,035	\$9,511	\$10,012	\$10,539	\$11,093	\$11,677	\$12,291

- Required to order:  
Model # including:
- Laminate OR melamine selection
  - PVC selection
  - Fabric selection

### General Specifications

**End Panels:** All vertical panels are 1" engineered wood with high pressure laminate or thermally fused laminate on both faces; exposed edges are banded with 3mm PVC with edges and corners radiused 1/8". The vertical panels use mechanical fasteners to secure them to top, back and base panels. The bottom of the end panels has non-marring adjustable height glides included.

**Top:** The top panel is 1" thick engineered with high pressure laminate or thermally fused laminate faces. The edges are banded with 3mm PVC. The top is attached with dowels and mechanical fasteners.

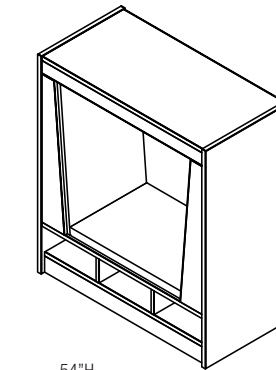
**Valance Panels:** Valance panels are 3/4" thick engineered with high pressure laminate or thermally fused laminate faces. The edges are banded with 3mm PVC. Valance panels wrap around the top and vertical sides of both faces of the assembly.

**Base Assembly:** The storage base assembly is built from 1" thick engineered wood horizontal panels & 3/4" thick engineered wood vertical panels with high pressure laminate or thermally fused laminate faces; exposed edges are banded with 3mm PVC. The base is constructed using dowel and glue joinery and fastened to the vertical panels with bolts into metal inserts.

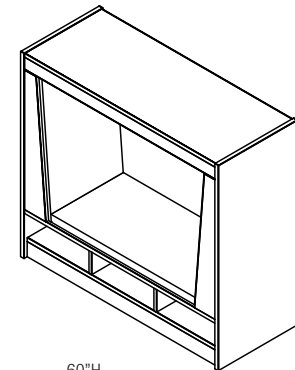
**Toe Assembly:** The toe assembly is built from 1" thick engineered wood with high pressure laminate or thermally fused laminate faces. The assembly is fastened to the vertical panels with bolts into metal inserts.

**Upholstered Cushions:** Cushions are high density 2.3/60 or 2.8/60 foam core based on design needs. Fabric cover is wrapped and sewn using single needle top stitch on all seams. Cushion has built-in bottom panel to secure fastening hook and loop strips so cushions can be removed to be cleaned. Bottom cushion is 2"th and tapered side cushions taper from 7" to 3", bottom to top.

**Note:** Oriole Nest ships fully assembled is double faced.



54"H  
Open Storage Base



60"H  
Open Storage Base

48"W Oriole Nest, Open, Open Storage, HPL Construction													
Model Number	O.A. D"	O.A. W"	O.A. H"	COM Ydg	COM Grade 1	Grade 2	Grade 3	Grade 4	Grade 5	Grade 6	Grade 7	Grade 8	Grade 9
NST00-OS-2448L-54	24	48	54	2.5	\$5,993	\$6,243	\$6,437	\$6,636	6842	\$7,055	\$7,272	7498	\$7,731
48"W Oriole Nest, Open, Open Storage, TFL Construction													
Model Number	O.A. D"	O.A. W"	O.A. H"	COM Ydg	COM Grade 1	Grade 2	Grade 3	Grade 4	Grade 5	Grade 6	Grade 7	Grade 8	Grade 9
NST00-OS-2448T-54	24	48	54	2.5	\$5,496	\$5,729	\$5,905	\$6,088	\$6,278	\$6,470	\$6,672	\$6,880	\$7,091
60"W Oriole Nest, Open, Open Storage, HPL Construction													
Model Number	O.A. D"	O.A. W"	O.A. H"	COM Ydg	COM Grade 1	Grade 2	Grade 3	Grade 4	Grade 5	Grade 6	Grade 7	Grade 8	Grade 9
NST00-OS-2460L-54	24	60	54	3	\$6,514	\$6,785	\$7,065	\$7,285	\$7,511	\$7,744	\$7,880	\$8,231	\$8,486
60"W Oriole Nest, Open, Open Storage, TFL Construction													
Model Number	O.A. D"	O.A. W"	O.A. H"	COM Ydg	COM Grade 1	Grade 2	Grade 3	Grade 4	Grade 5	Grade 6	Grade 7	Grade 8	Grade 9
NST00-OS-2460T-54	24	60	54	3	\$5,972	\$6,224	\$6,418	\$6,617	\$6,823	\$7,033	\$7,252	\$7,477	\$7,708
Set Up Charges and Upcharges for Non-Standard and Custom Finishes													
Model Number	Description												List Price
Group 2 Powder Coat	Set up charge, per color, per order, for Group 2 Powder Coat												\$361
Non-Standard PVC	Upcharge, per color, per order, for non-standard PVC												\$947

**Required to order:**  
 Model # including:  
 • Laminate OR melamine selection  
 • PVC selection  
 • Fabric selection